

SECTION II

TM 5-2330-378-14&P

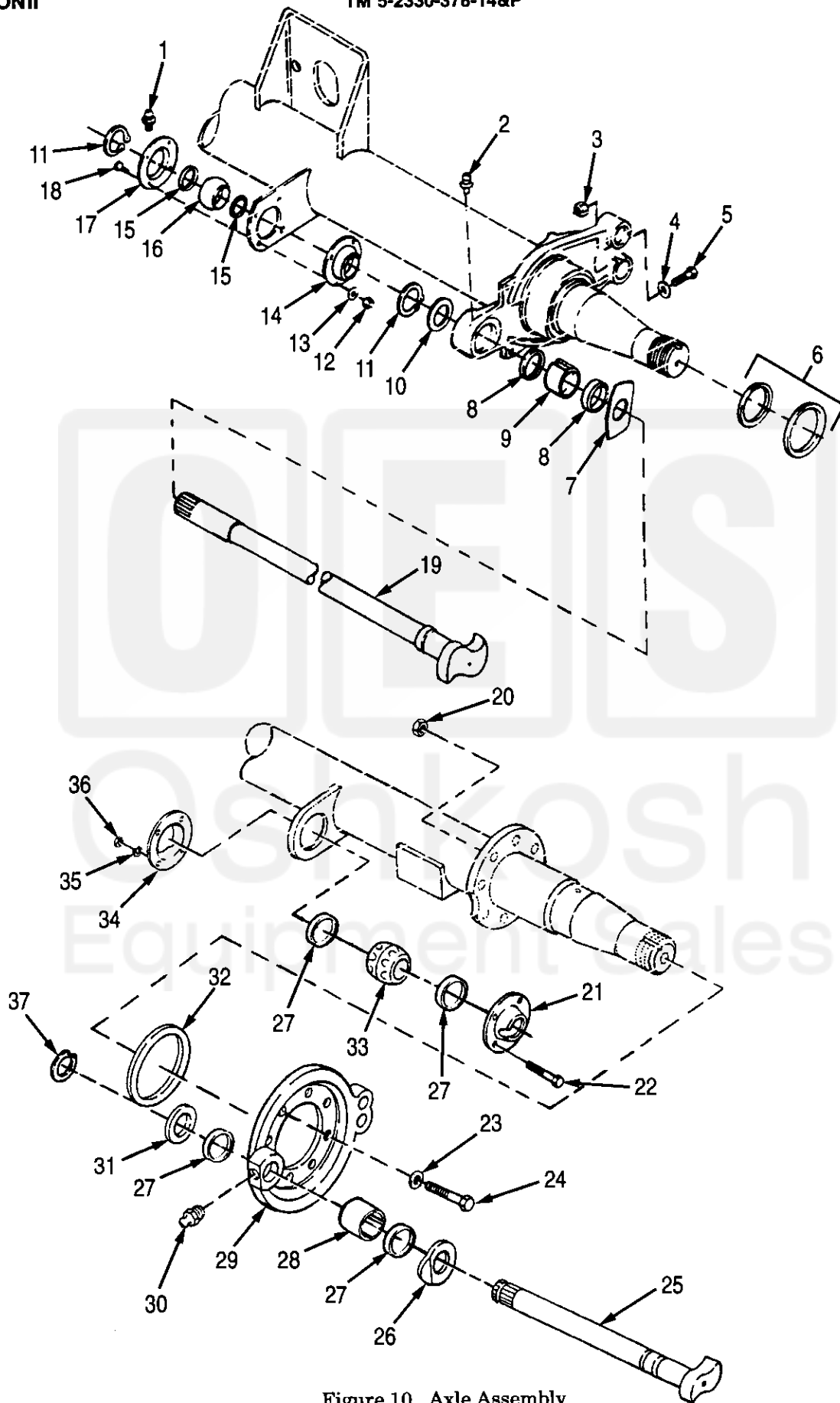


Figure 10. Axle Assembly

SECTION II TM5-2330-378-14&P

(1) ITEM NO	(2) SMR CODE	(3) CAGEC	(4) PART NUMBER	(5) DESCRIPTION AND USABLE ON CODES (UOC)	(6) QTY
GROUP 12 BRAKES					
GROUP 1202 SERVICE BRAKES					
FIG.10 AXLE ASSEMBLY					
1	PAOZZ	62707	500174-2	. FITTING, LUBRICATION..... UOC:TLB,	2
2	PAOZZ	97271	500168-2	. FITTING, LUBRICATION..... UOC:TLB,	2
3	PAOZZ	96906	MS51968-14	. NUT, PLAIN, HEXAGON..... UOC:TLB,	2
4	PAOZZ	96906	MS35333-44	. WASHER, LOCK..... UOC:TLB,	2
5	PAOZZ	96906	MS35308-417	. SCREW, CAP, HEXAGON H..... UOC:TLB,	2
6	PAOZZ	26151	372-7098	. SEAL KIT..... UOC:TLB,	2
7	PAFZZ	62707	M10HS115	. SPACER, PLATE..... UOC:TLB,	2
8	PAFZZ	62707	M16HH100	. PACKING, PREFORMED..... UOC:TLB,	4
9	PAFZZ	62707	M10WS109	. BUSHING, SLEEVE..... UOC:TLB,	2
10	PAOZZ	62707	M10HS117	. WASHER, FLAT..... UOC:TLB,	6
11	PAOZZ	62707	38038	. RING, RETAINING..... UOC:TLB,	4
12	PAOZZ	62707	500370-2	. NUT, PLAIN, HEXAGON..... UOC:TLB,	8
13	PAOZZ	96906	MS35338-8	. WASHER, LOCK..... UOC:TLB,	8
14	PAOZZ	62707	M10WH100-1	. PLATE, RETAINING, SHA..... UOC:TLB,	2
15	PAOZZ	62707	M10HH100	. PACKING, PREFORMED..... UOC:TLB,	4
16	PAOZZ	62707	M10WJ100	. BEARING, PLAIN, SPHER..... UOC:TLB,	2
17	PAOZZ	62707	M10WH100-2	. PLATE, RETAINING, SHA..... UOC:TLB,	2
18	PAOZZ	62707	500397-9	. BOLT, MACHINE..... UOC:TLB,	8
19	PAFZZ	62707	M12WKL10-233	. CAMSHAFT, ACTUATING, L.H..... UOC:TLB,	1
19	PAFZZ	62707	M12WKR10-234	. CAM, CONTROL R.H..... UOC:TLB,	1
20	PAFZZ	97271	500371-5	NUT, BRAKE MOUNT..... UOC:T01,U17,	48
21	PFFZZ	62707	M10HN138	WASHER, KEY..... UOC:T01,U17,	6
22	XBFZZ	26697	MP0-0033	SCREW..... UOC:T01,U17,	24
23	PFFZZ	56697	403117	WASHER, LOCK..... UOC:T01,U17,	48
24	PAFZZ	62707	500412-15	BOLT, MACHINE..... UOC:T01,U17,	48

SECTION II

TM 5-2330-378-14&P

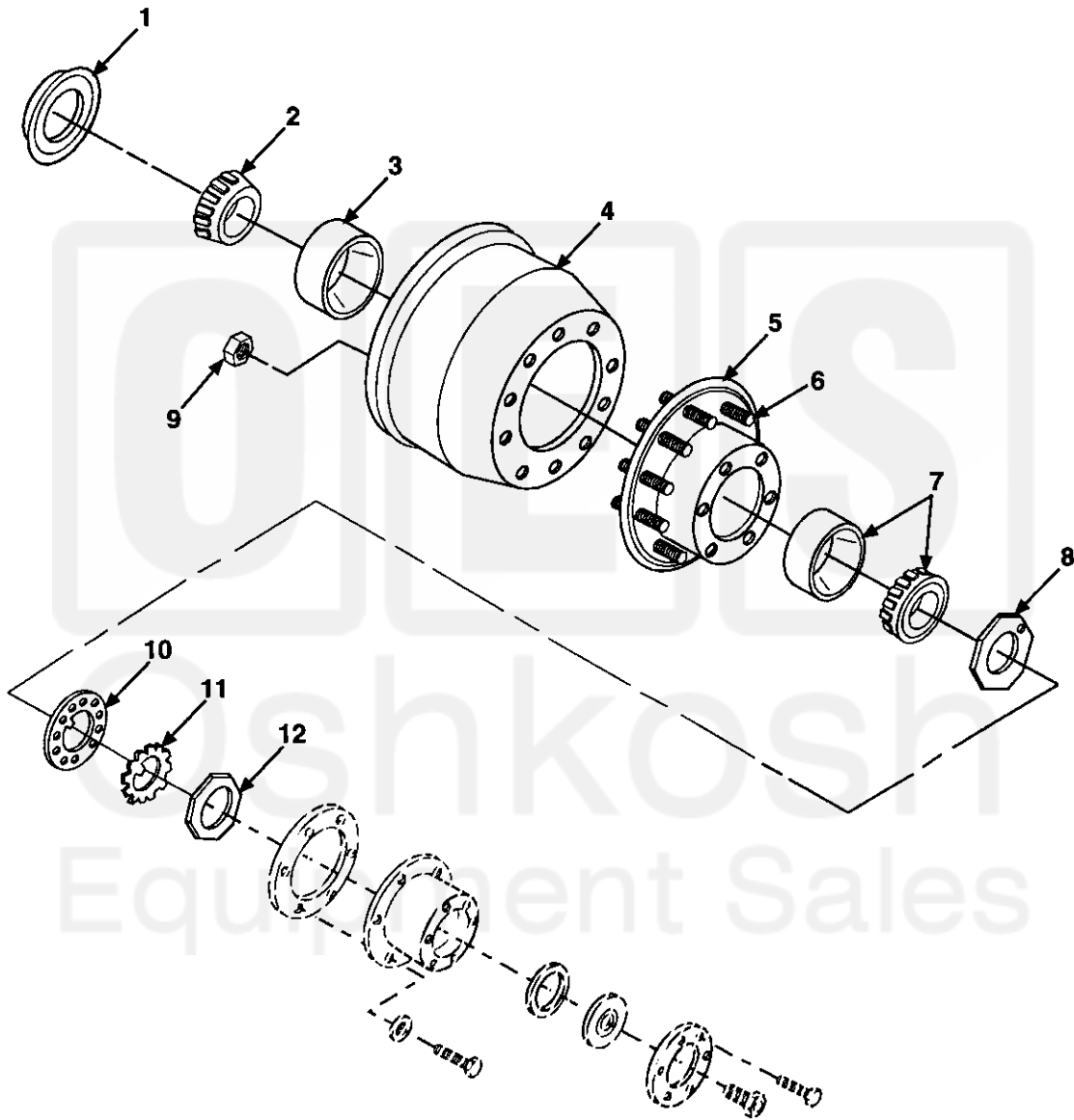


Figure 19. Hub and Drum Assembly

SECTION II TM5-2330-378-14&P

(1) ITEM NO	(2) SMR CODE	(3) CAGEC	(4) PART NUMBER	(5) DESCRIPTION AND USABLE ON CODES(UC)	(6) QTY
GROUP 1311 WHEEL ASSEMBLY					
FIG.19 HUB AND DRUM ASSEMBLY					
1	PAOZZ	26151	372-7098	SEAL KIT.....	6
				UOC:T01,U17,	
2	PAOZZ	09605	P6130A	CONE AND ROLLERS,TA.....	6
				UOC:T01,U17,	
3	PAOZZ	60038	653	CUP,TAPERED ROLLER OUTER.....	6
				UOC:T01,U17,	
4	PAOFF	18889	63631	BRAKE DRUM.....	6
				UOC:T01,U17,	
5	PFOZZ	26697	MPO-0262	HUB,WHEEL,VEHICULAR.....	6
				UOC:T01,U17,	
6	PAOZZ	09386	13989	STUD,SHOULDERED LEFT.....	10
				UOC:T01,U17,	
7	PAOZZ	96906	MS19081-113	BEARING,ROLLER,TAPE INNER.....	6
				UOC:T01,U17,	
8	PAOZZ	62707	M10HN101	NUT,PLAIN,OCTAGON.....	6
				UOC:T01,U17,	
9	PAOZZ	26697	MP0-0123	NUT HUB DRUM TO HUB ATTACHING.....	10
				UOC:T01,U17,	
10	PAOZZ	41885	813508	LOCK RING.....	6
				UOC:T01,U17,	
11	PAOZZ	62707	M10HN151	WASHER.....	6
				UOC:T01,U17,	
12	PAOZZ	62707	M10HN102	NUT,PLAIN,SLOTTED,O OUTER.....	6
				UOC:T01,U17,	

END OF FIGURE

